

# Order form

for „LYNX“ register measuring elements  
(Valid as from May 2007)

Polygraphische innovative  
Technik Leipzig

There are four types of measuring elements, which can either be ordered set-wise in three set variants or as individual measuring elements. The required number of colour separations will be delivered in accordance with the type of measuring element.

**Please, fill in an order form for each set variant.**

Tick only one box belonging to the items:  
type of measuring element, set variant with number of sets or individual elements.

<b>Customer</b> (Name of company, contact person)	
phone:	
required date of delivery:	order number:
date:	signature:

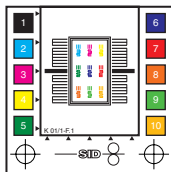
## 1. Required medium:

(Please tick)

- Mac                       diskette/CD-ROM (eps-files)  
 PC                          e-mail: \_\_\_\_\_ @ \_\_\_\_\_ . \_\_\_\_\_

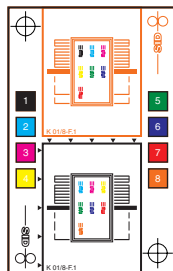
## 2. Required type of measuring element:

(Please tick)



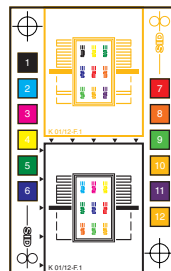
**basic element**  
(10 printing units max.)

- per element  
100,- €



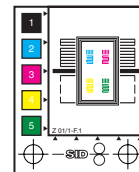
**combination element**  
(8 printing units max.)

- per element  
100,- €



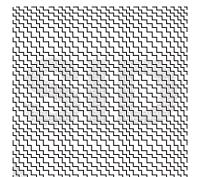
**combination element**  
(12 printing units max.)

- per element  
100,- €



**newspaper element**  
(5 printing units max.)

- per element  
100,- €



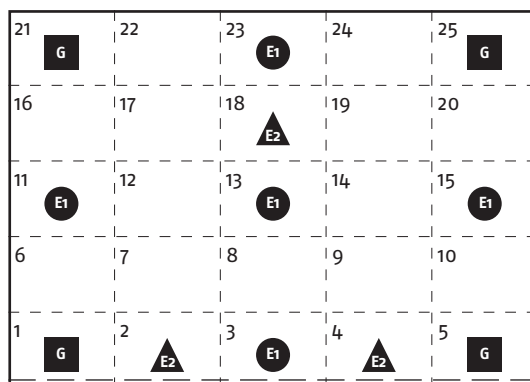
**special element**

- per element  
100,- €

## 3. Required set variant for the measuring points and required number of sets:

(Please tick)

Explanation of measuring points on the printed sheet:



Set variant:

Number of sets:

- Basic set** **G** \_\_\_\_\_ sets  
 (each consisting of one measuring element for the positions 1, 5, 21, 25 i. e. four measuring points)
- Extension set 1** **E1** \_\_\_\_\_ sets  
 (each consisting of one measuring element for the positions 3, 11, 13, 15, 23 i. e. five measuring points)
- Extension set 2** **E2** \_\_\_\_\_ sets  
 (each consisting of one measuring element for the positions 2, 4, 8, 18 i. e. four measuring points)
- Individual elements** \_\_\_\_\_ sets

Position: \_\_\_\_\_

## 4. Prices (plus VAT):

The price per order (i. e. per each order form) results from the price for the required type of measuring element multiplied by the number of measuring points of the set variant and the number of sets or individual elements ordered.